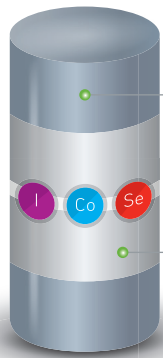




TRACE ELEMENT BOLUSES FOR ADULT CATTLE



BOLUS TECHNOLOGY

Two-part bolus erodes releasing iodine, cobalt and selenium

Wrapper dissolves in the reticulum and the bolus parts separate

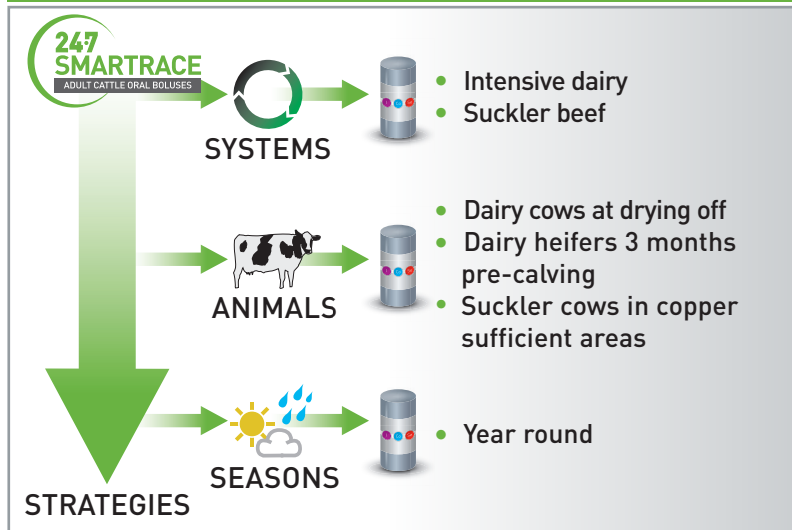
ACTIVE CONSTITUENT PER 160 g BOLUS

Iodine	4139 mg
Cobalt	485 mg
Selenium	220 mg

ALSO CONTAINS

Zinc	132729 mg
------	-----------

WHEN TO USE 24-7 SMARTRACE ADULT CATTLE



BENEFITS

- Eroding technology means consistent supply of trace elements
- Delivers iodine, cobalt and selenium for up to 6 months
- Free of copper – important for closely managed dairy cows
- Strong healthy calves
- Easier, cleaner calvings
- Optimise conception rates
- Reduced calving spread
- Contains no GMOs or material of animal origin
- One 160 g bolus should be given to each animal**
- Pack size - 10 boluses**



PACIFIC BIOLOGICS

PO Box 58, Scarborough, QLD 4020

Ph: (07) 3283 5077 | Fax: (07) 3283 5088 | Email: info@pacificbiologics.com.au | Web: www.pacificbiologics.com.au